

**Bicycles and Pedestrians For Managers** is a one day training course designed to provide planners, engineers, architects, designers and practitioners with assistance in planning and designing facilities for cyclists and pedestrians.

The training course is based on the RTA's bicycle and pedestrian guidelines. The day is divided into theoretical and practical components. These are integrated with each other through lectures, discussions, practical fieldwork and group exercises. The theory is demonstrated and viewed by the group during the fieldwork undertaken on bicycle and by walking. The aim of the fieldwork is to facilitate the understanding of the various aspects of design from the point of view of cyclists and pedestrians. The experience relates to practical sensitivity such as comfort along the road environment and freedom of traveling.

A brief analysis of the surface materials and of the landscape environment developed around the cycling/ pedestrian facilities is also introduced as an opportunity for an investigation to focus on the influences of the existing built environment on the road and traffic design.

The course has been developed by the NSW Roads and Traffic Authority. The course is run under license from the RTA to Urban Arc.

The fee includes course notes folder, bicycle use for the day, refreshments on arrival, morning tea, lunch and afternoon tea. Free car and bicycle parking is available at the venue. The venue is in Bicentennial Park a scenic location situated a ten minute walk from the Olympic Park Railway station.

*This course is offered by*  
**Urban Arc Pty Ltd**

*Licensed by*  
**The Roads and Traffic Authority of  
New South Wales**

*Organisation and direction*  
**Waterview Convention Centre  
Urban Arc Pty Ltd**

*Presenters*  
**Contessa Hajinikitas  
Dr Tomaso Carrer**

*All the events will be held at*  
**Waterview Convention Centre  
Bicentennial Park Homebush**

*Fee*  
**The course fee is \$550 or  
\$1000 for 2 or more participants**

*Date*  
**Monday 16<sup>th</sup> August 2010  
9am until 5pm**

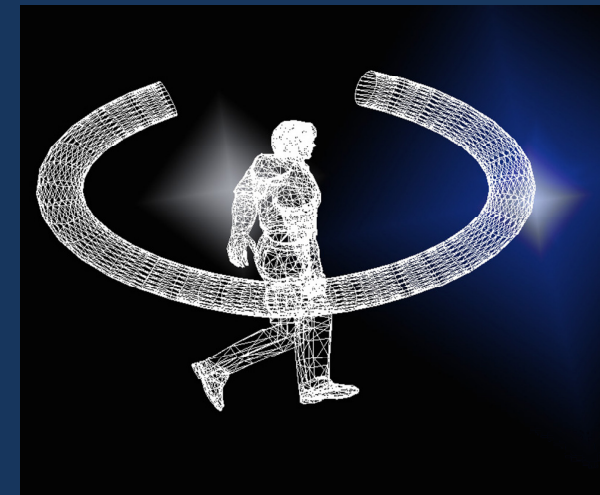
*Information*  
**Urban Arc Pty Ltd  
02 95944819  
0422 873355  
urbanarc@urbanarc.com.au  
[www.urbanarc.com.au](http://www.urbanarc.com.au)**



**16<sup>th</sup> August 2010**

# **BICYCLES AND PEDESTRIANS FOR MANAGERS**

**One Day RTA Training Course**



## Session 1

(9:15 – 9:30) Bel Parco Private Room  
**Introduction and Supporting  
RTA Policy  
Who are We?**  
*Contessa Hajinikitas*

## Session 2

(9:30 – 9:55) Bel Parco Private Room  
**How and Why we provide  
for bicycle riders and  
pedestrians**  
*Contessa Hajinikitas*

## Session 3

(9:55 – 10:30) Bel Parco Private Room  
**Bicycle riders and pedestrians  
as transport**  
*Contessa Hajinikitas*

(10:30– 10:40) *Discuss Fieldwork*

(10:40– 11:00) *Morning Tea*

## Session 4

(11:00 – 1pm) Homebush Olympic Park  
(Starts outside Bike Hire)  
**Bicycle and Pedestrian fieldwork**  
*Dr Tomaso Carrer*

(1pm– 2pm) *Lunch*

(2pm– 2:15pm) *Discuss Fieldwork*



## Session 5

(2:15 – 3pm) Bel Parco Private Room  
**Facilities for  
Pedestrians**  
*Contessa Hajinikitas*

## Session 6

(2:15 – 3pm) Bel Parco Private Room  
**Facilities for Bicycles**  
*Contessa Hajinikitas*

(3pm – 3.30) *Afternoon Tea and  
Discussing findings*

(3:30– 3.50) *Group Exercise  
Group findings*

(3:50– 4.25) *Group Exercise  
Group discussion/  
presentations*

## Session 7

(4:25 – 5pm) Bel Parco Private Room  
**Conclusions and  
Summary**  
*Contessa Hajinikitas*